





MODULAR HOUSE

construction system
ConHouse

What is ConHouse system?

ConHouse is an open (modular) house construction system in which the sheathing is made of reinforced concrete prefabricated elements (concrete slab poured from architectural concrete of B35 or higher class, water resistance W8).

A popular construction method in Europe

Construction in prefabricated houses is becoming increasingly popular in Europe as well as around the world. In Poland, it is a new technology that has gained a fan base very quickly, through incredibly fast construction time and durability of workmanship. In addition, ConHouse houses can be classified as passive houses through low energy consumption.

ConHouse passive house

ConHouse Passive House, in which photovoltaic installation and mechanical ventilation with recuperation are installed, meets the NF15 standard. This standard specifies the maximum energy demand of a house per square meter. The energy demand of the ConHouse house is between 9.8 and 10.3 kWh (m2/year), which means that it is lower than the required maximum for passive houses and as much as several times lower compared to houses built using the traditional method.



ConHouse house construction scheme

The most important advantages of ConHouse house



ECOLOGY



HIGH RESISTANCE TO EXTREME WEATHER CONDITIONS
(e.x. it is not possible to tear of the roof by a windstorm)



USABILITY



PASSIVITY/
ZERO ENERGY



CONSTRUCTION IN A VERY DIVERSE AREA
(including this hard-to-reach)



ULTRA SHORT CONSTRUCTION TIME



DURABILITY



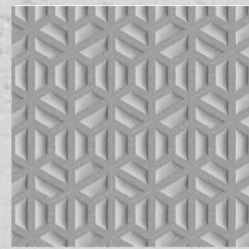
NEARLY ZERO ANNUAL USAGE COSTS



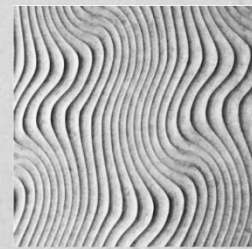
UNLIMITED POSSIBILITY ARRANGEMENTS
(including change of room layout)



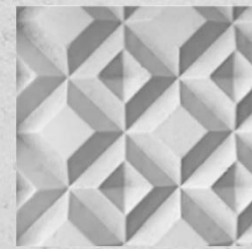
MODERN AND USEFUL DESIGN



01



02



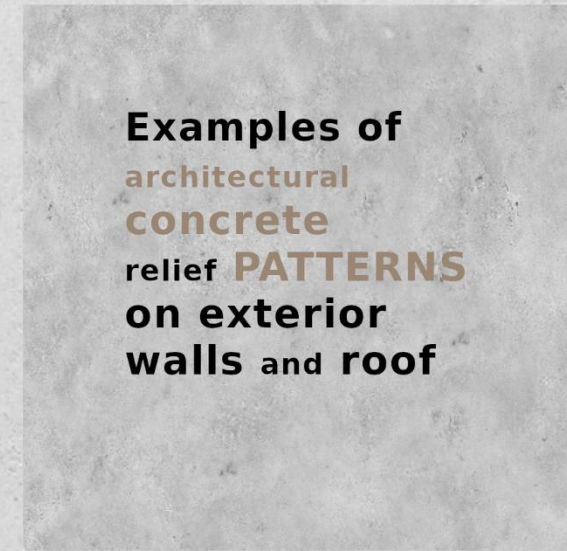
03



04



13



19



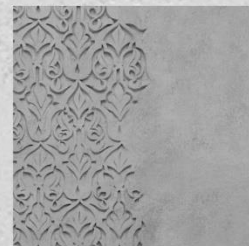
05



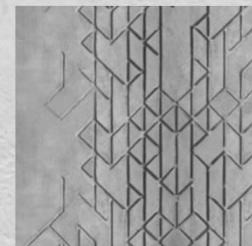
06



07



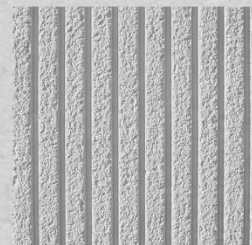
08



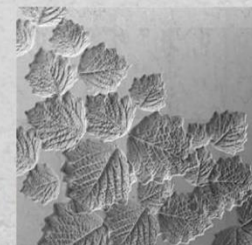
14



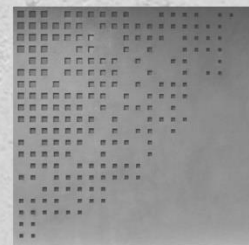
09



10



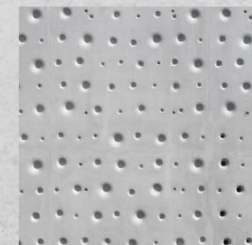
11



12



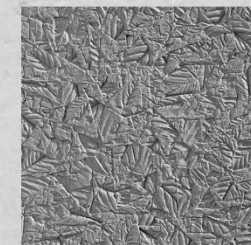
15



16



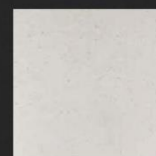
17



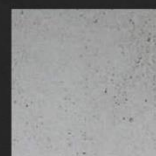
18



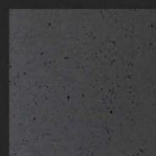
NATURAL



WHITE



GREY



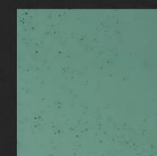
ANTHRACITE



CREAM



RED



GREEN

Examples of architectural concrete COLOURS

01



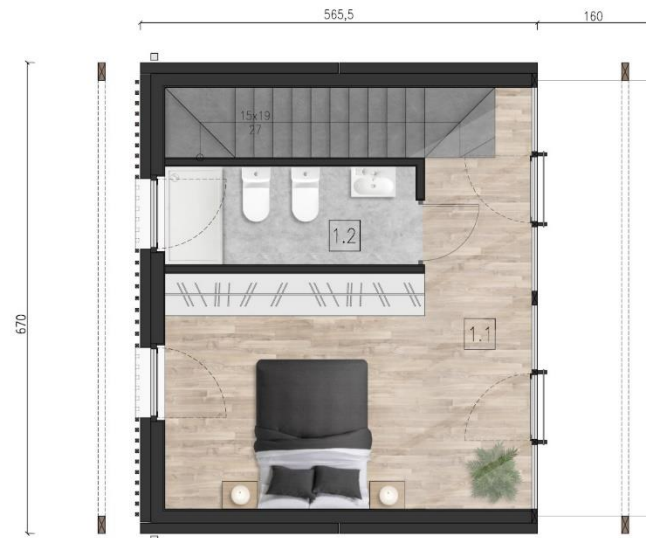
Con House

TYPICAL HOUSE
VARIANTS

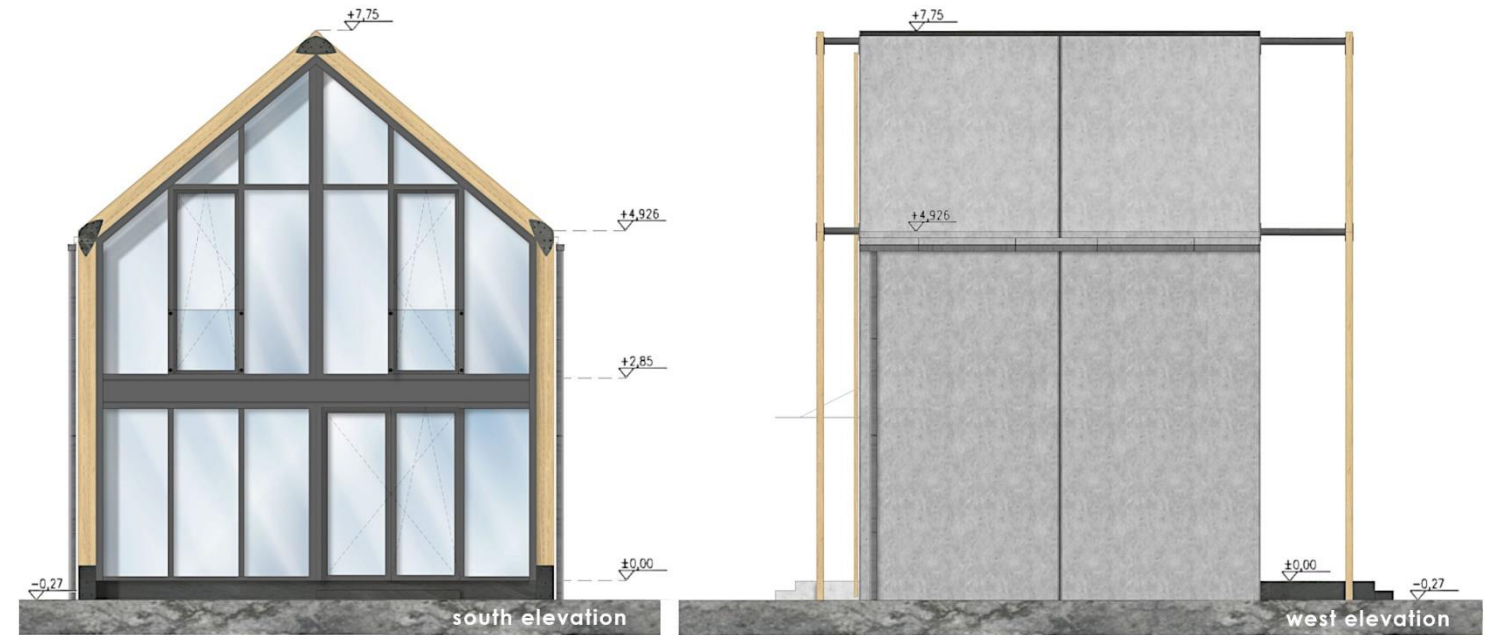
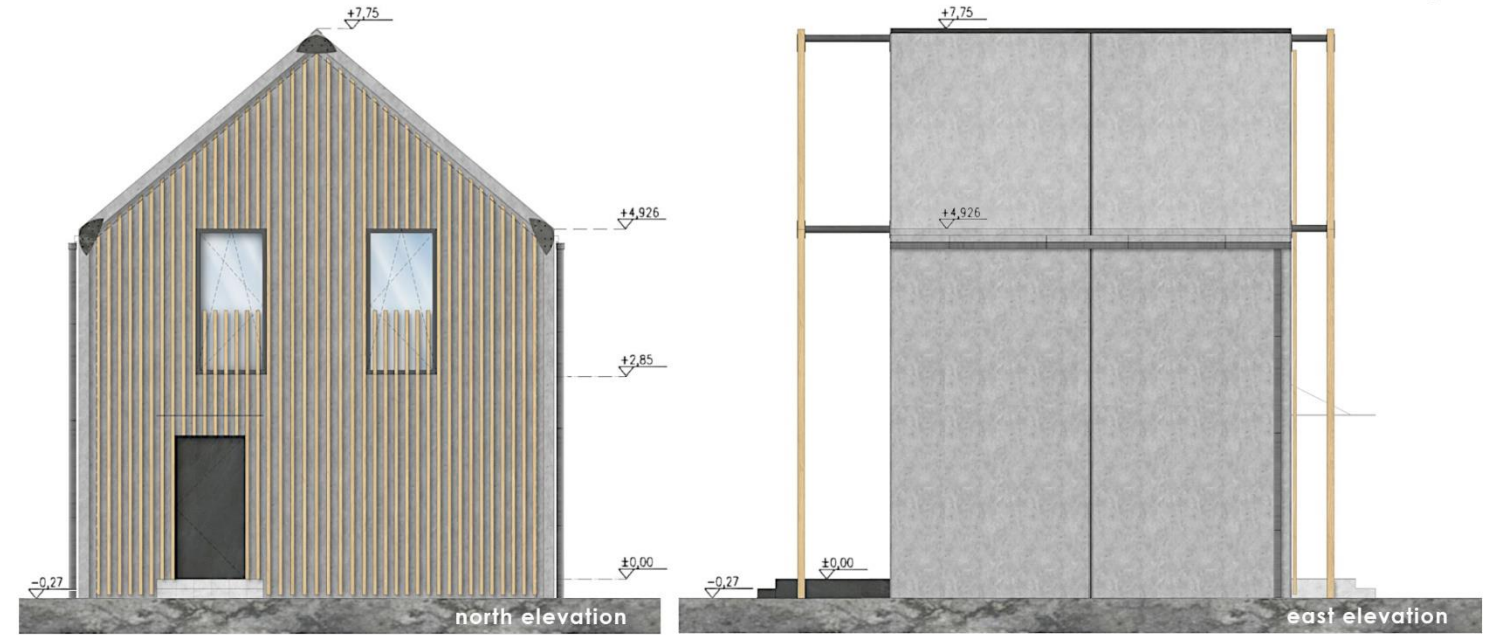
GROUND FLOOR		area
0.1	HALL	2.3 m ²
0.2	LIVING ROOM WITH A KITCHEN	21.6 m ²
0.3	BATHROOM	2.1 m ²
0.4	STAIRS	4.7 m ²
		30.7 m²



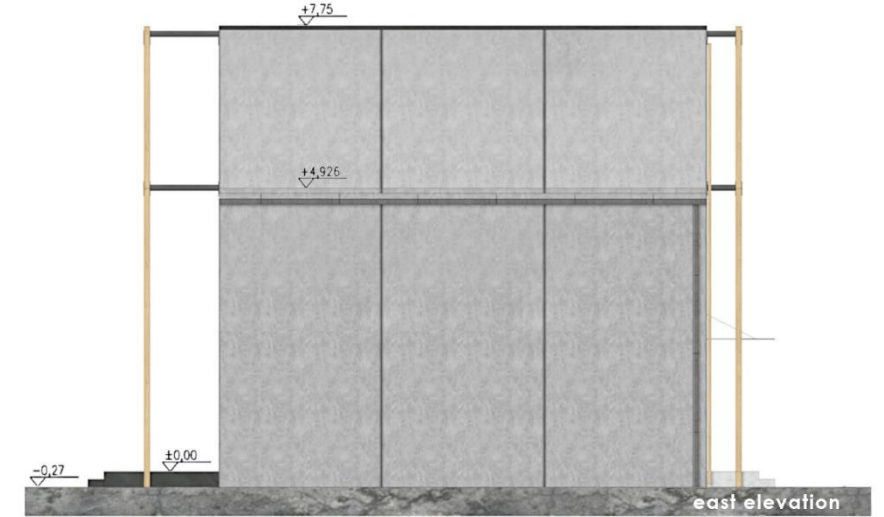
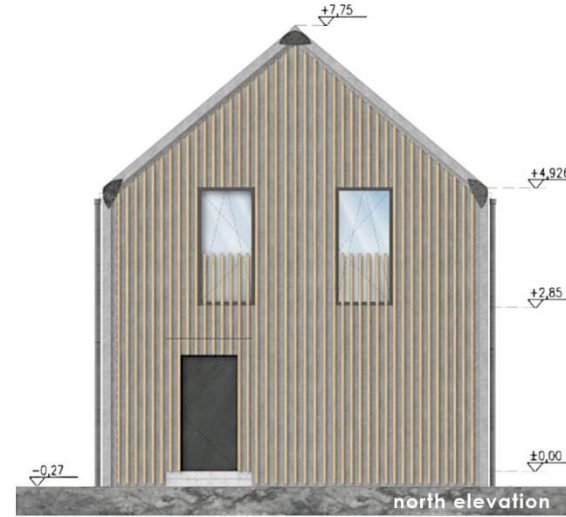
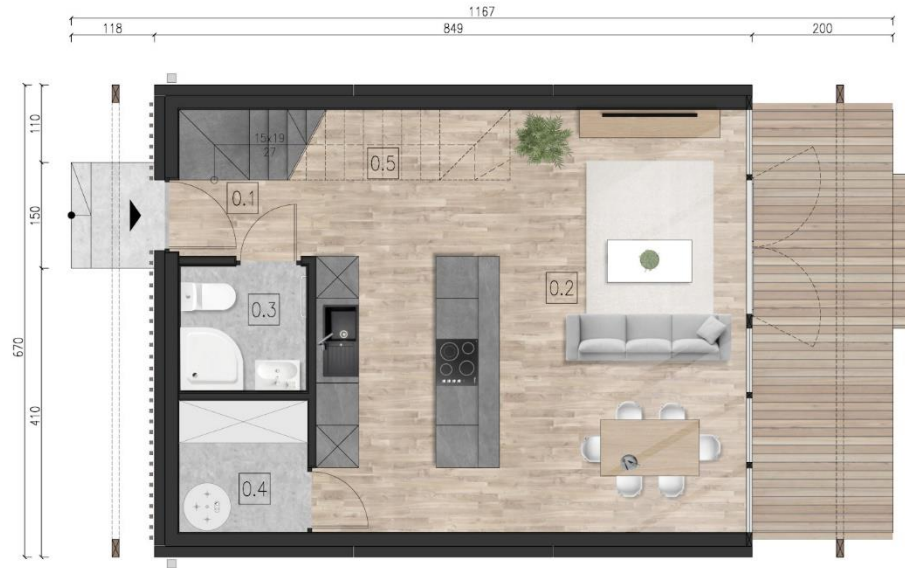
FIRST FLOOR		area
1.1	BEDROOM	20.6 m ²
1.2	BATHROOM	5.0 m ²
		25.6 m²



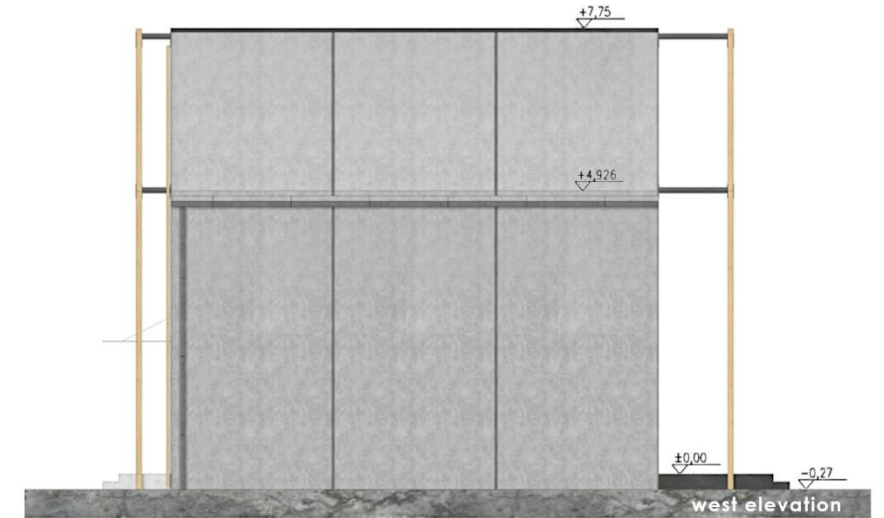
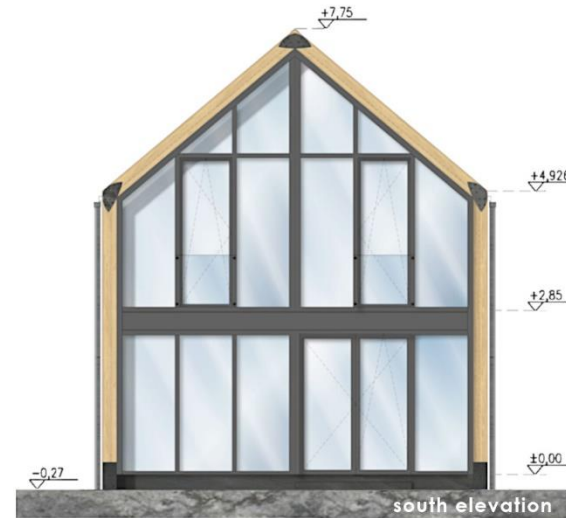
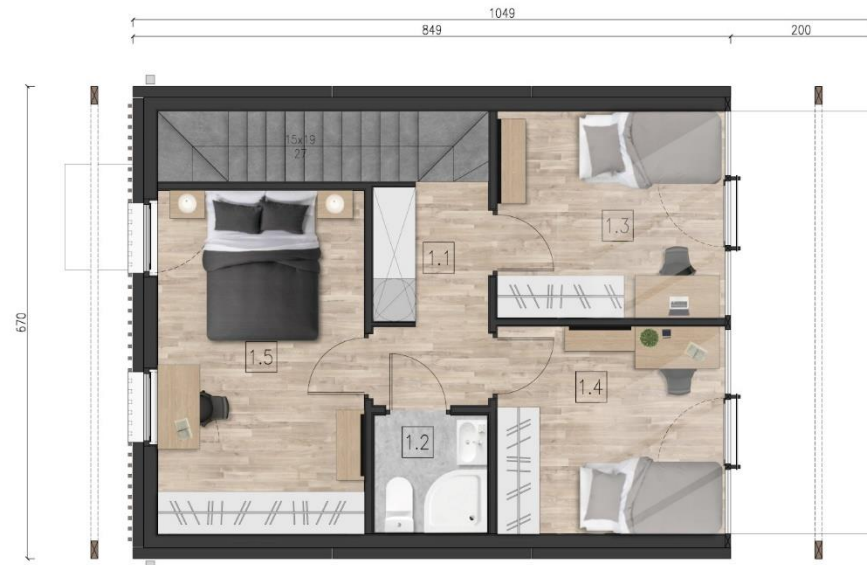
TOTAL:
GROUND FLOOR AND
FIRST FLOOR: 56.3m²



GROUND FLOOR	area
0.1 HALL	2,1 m ²
0.2 LIVING ROOM WITH A KITCHEN	33,9 m ²
0.3 BATHROOM	3,3 m ²
0.4 TECHNICAL ROOM	3,4 m ²
0.5 STAIRS	4,7 m ²
	47,4 m²



FIRST FLOOR	area
1.1 CORRIDOR	5,1 m ²
1.2 BATHROOM	2,8 m ²
1.3 BEDROOM I	9,5 m ²
1.4 BEDROOM II	9,5 m ²
1.5 BEDROOM III	14,3 m ²
	41,2 m²



TOTAL:
GROUND FLOOR AND
FIRST FLOOR: 88,6m²



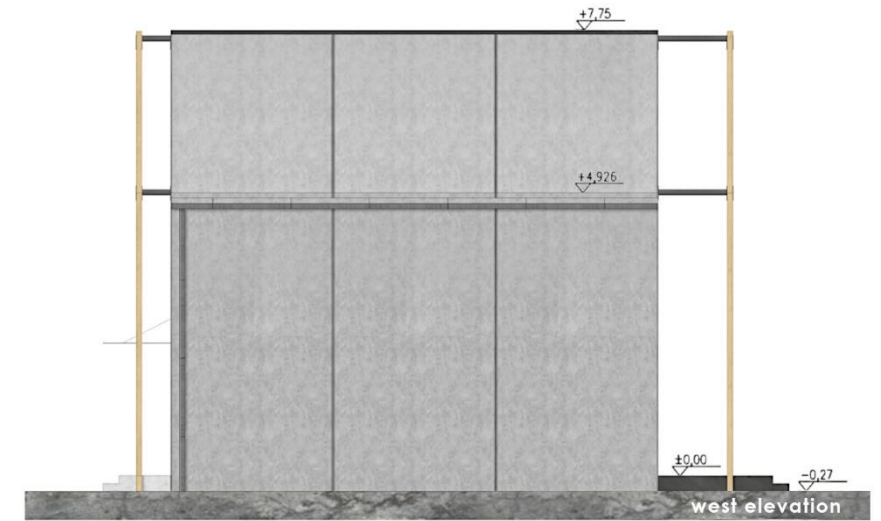
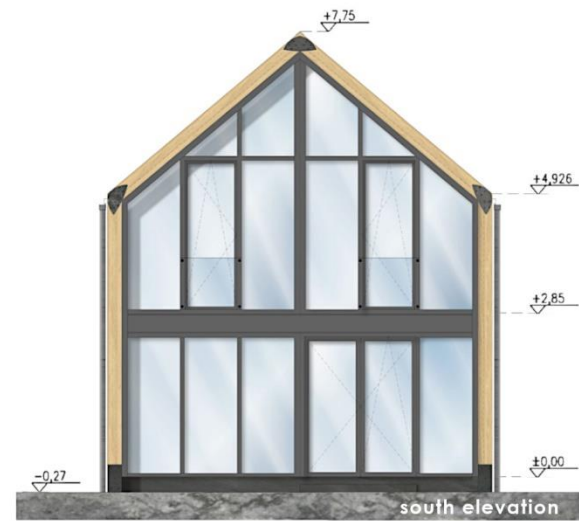
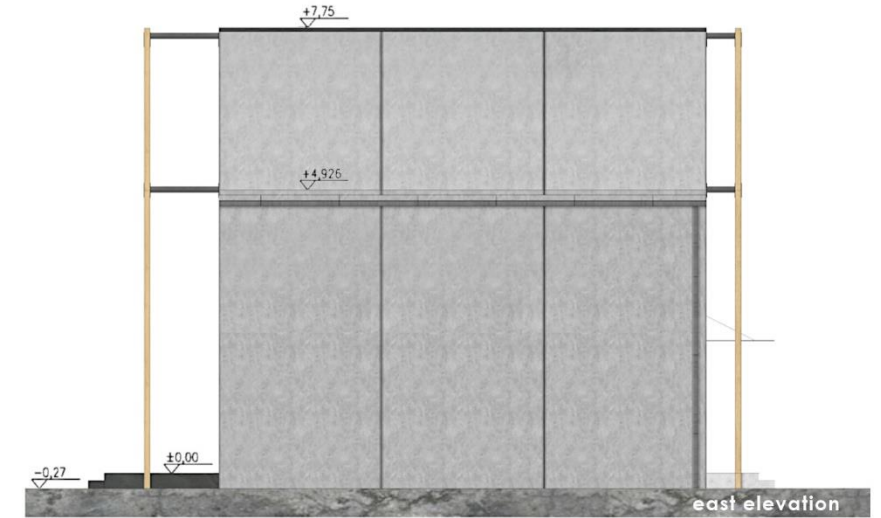
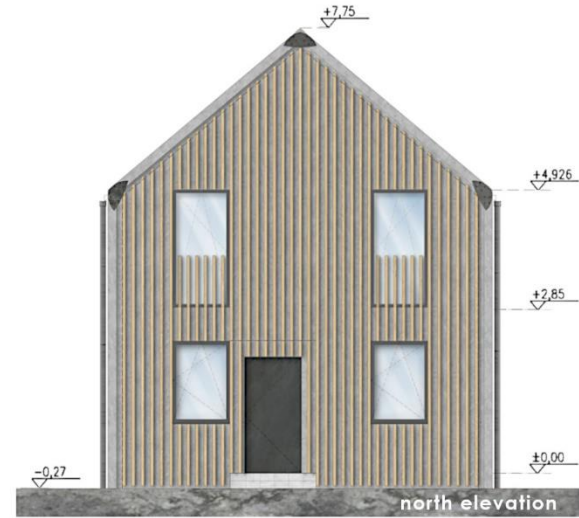
GROUND FLOOR		area
0.1	HALL	2.7 m ²
0.2	LIVING ROOM WITH A KITCHEN	28.0 m ²
0.3	ROOM	7.7 m ²
0.4	BATHROOM	3.6 m ²
0.5	STAIRS	4.3 m ²
		46.3 m²



FIRST FLOOR		area
1.1	CORRIDOR	2.8 m ²
1.2	BEDROOM I	10.1 m ²
1.3	BEDROOM II	10.1 m ²
1.4	BEDROOM III	14.0 m ²
1.5	BATHROOM	3.3 m ²
		40.3 m²



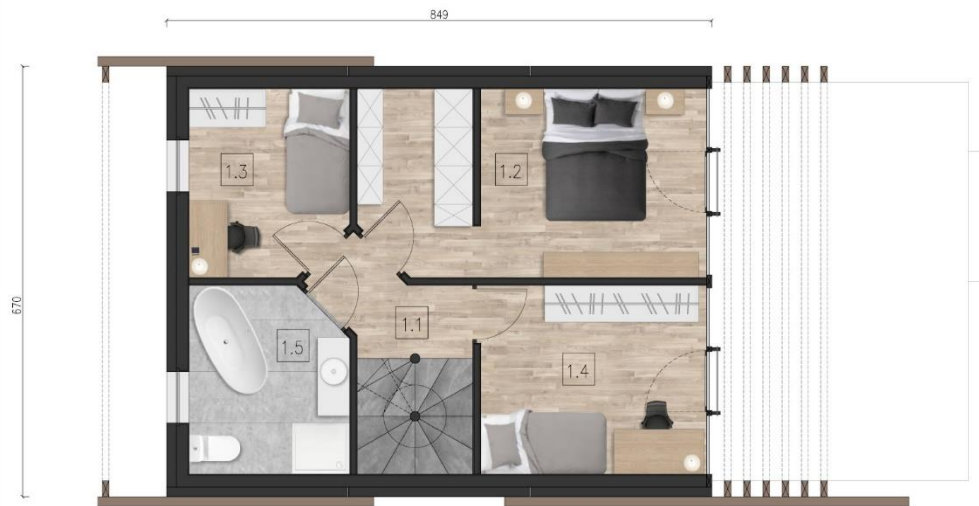
TOTAL:
GROUND FLOOR AND
FIRST FLOOR: 86,6m²



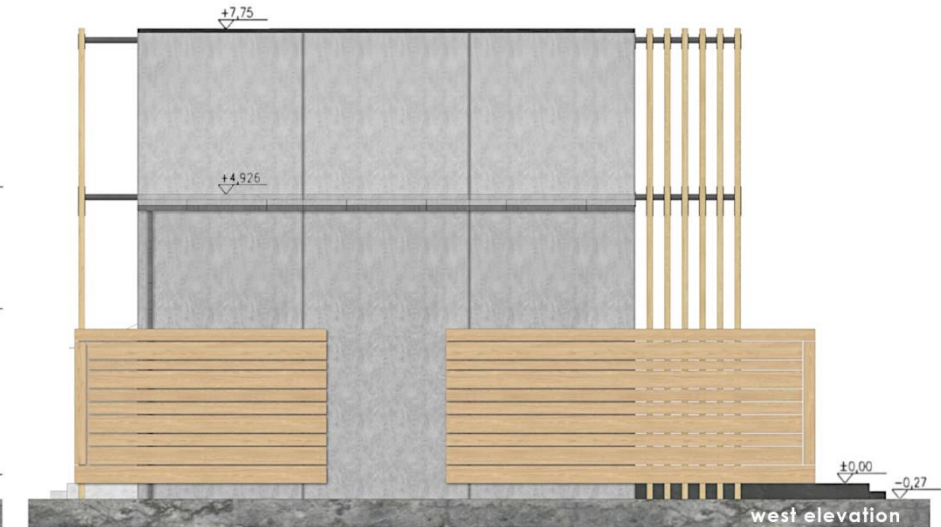
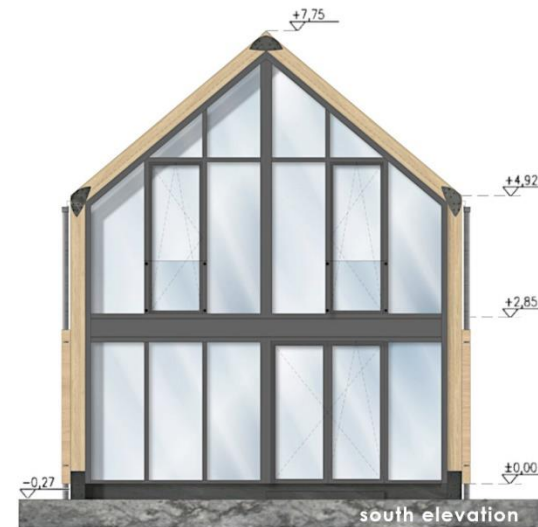
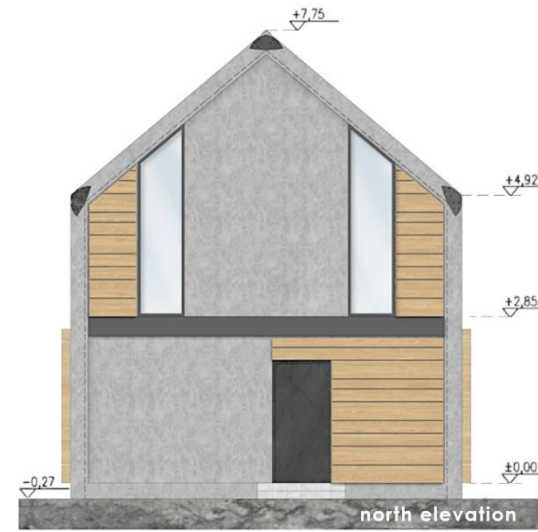
GROUND FLOOR		area
0.1	LIVING ROOM, KITCHEN, HALL	40,9 m ²
0.2	WC	2,3 m ²
0.3	TECHNICAL ROOM	4,3 m ²
		47,5 m²



FIRST FLOOR		area
1.1	CORRIDOR	3,3 m ²
1.2	BEDROOM WITH CLOSET	15,4 m ²
1.3	STUDY ROOM	7,0 m ²
1.4	ROOM	10,0 m ²
1.5	BATHROOM	7,00 m ²
		42,6 m²



TOTAL:
GROUND FLOOR AND
FIRST FLOOR: 90,1m²



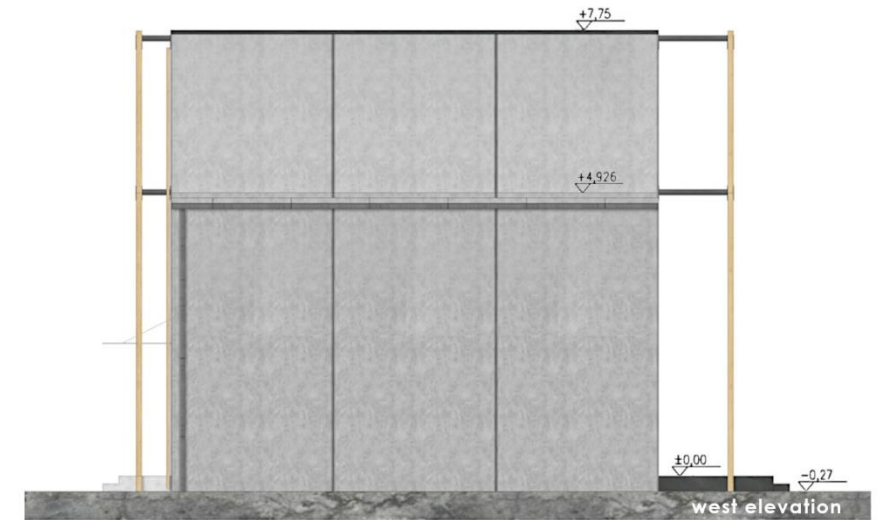
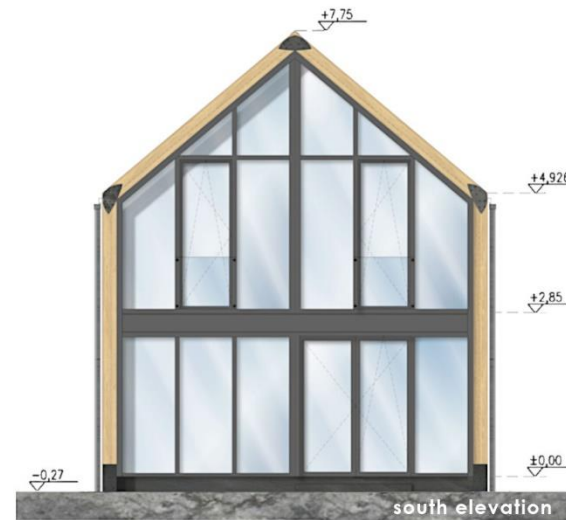
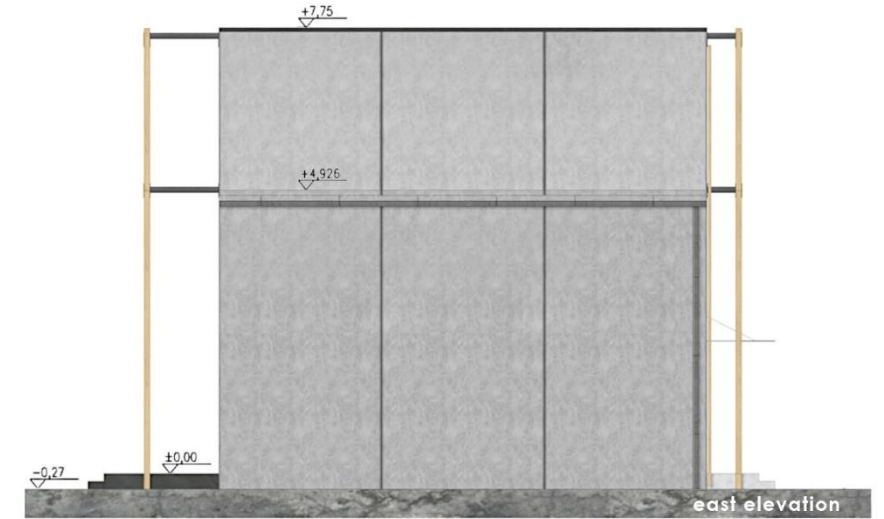
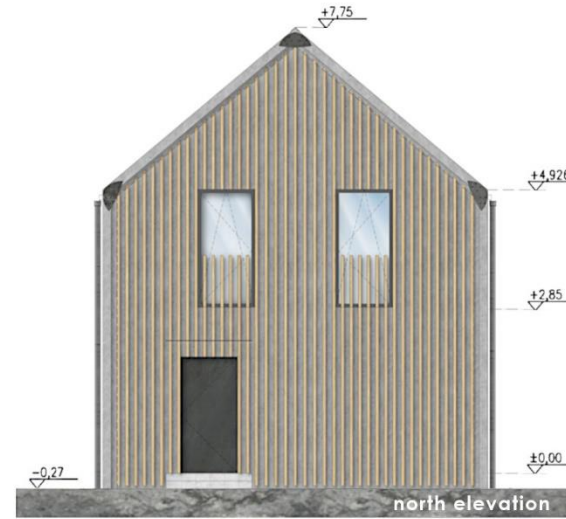
GROUND FLOOR	area
0.1 HALL	2,4 m ²
0.2 LIVING ROOM WITH A KITCHEN	35,5 m ²
0.3 BATHROOM	3,1 m ²
0.4 TECHNICAL ROOM	2,8 m ²
0.5 STAIRS	4,7 m ²
	48,5 m²



FIRST FLOOR	area
1.1 CORRIDOR	5,2 m ²
1.2 BATHROOM	2,8 m ²
1.3 BEDROOM I	9,2 m ²
1.4 BEDROOM II	9,2 m ²
1.5 BEDROOM III	14,3 m ²
	40,7 m²



TOTAL:
GROUND FLOOR AND
FIRST FLOOR: 89,2m²



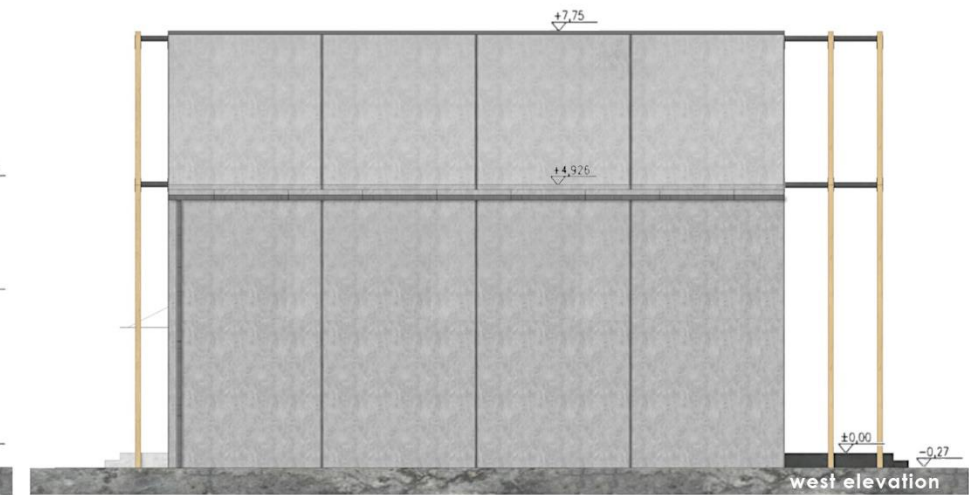
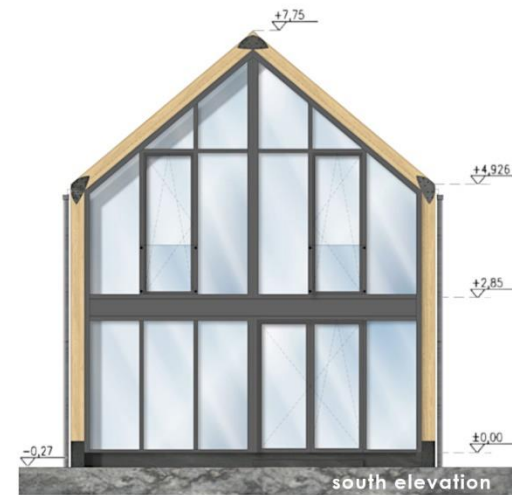
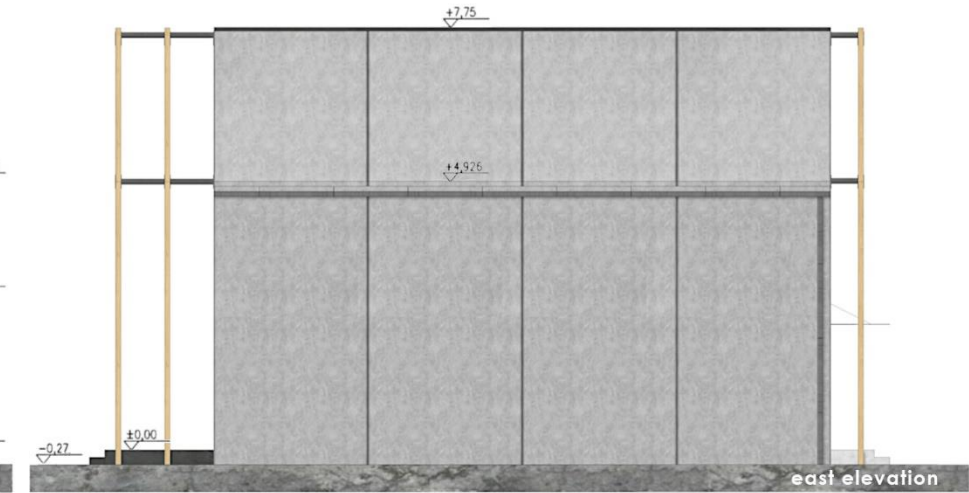
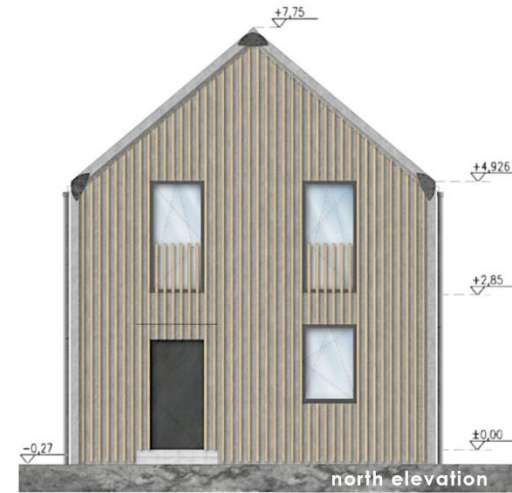
GROUND FLOOR		area
0.1	HALL	7.4 m ²
0.2	LIVING ROOM WITH A KITCHEN	35.0 m ²
0.3	ROOM	9.1 m ²
0.4	BATHROOM	3.3 m ²
0.5	TECHNICAL ROOM	2.8 m ²
0.6	STAIRS	4.7 m ²
		62.3 m²



FIRST FLOOR		area
1.1	CORRIDOR	9.6 m ²
1.2	BEDROOM I	11.3 m ²
1.3	BEDROOM II	11.3 m ²
1.4	BEDROOM III	17.1 m ²
1.5	BATHROOM I	4.4 m ²
1.6	BATHROOM II	3.5 m ²
		57.2 m²



TOTAL:
GROUND FLOOR AND
FIRST FLOOR: 119,5m²



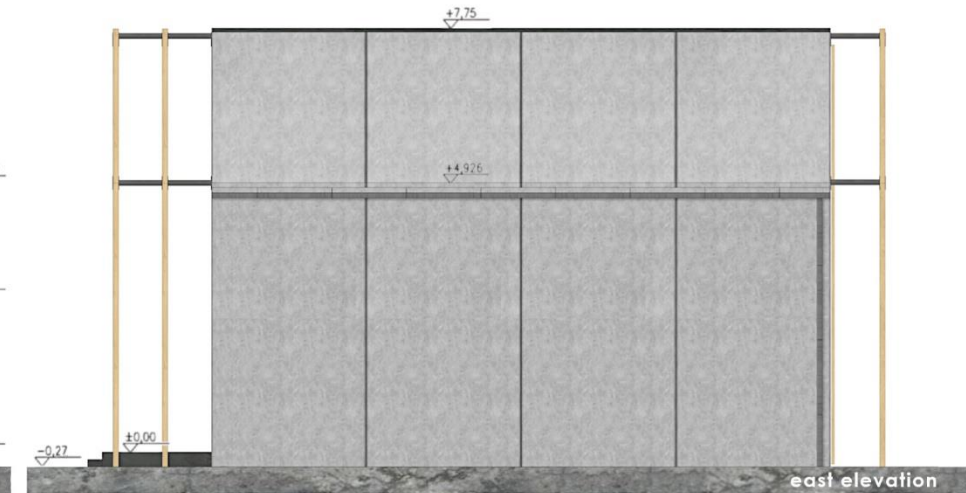
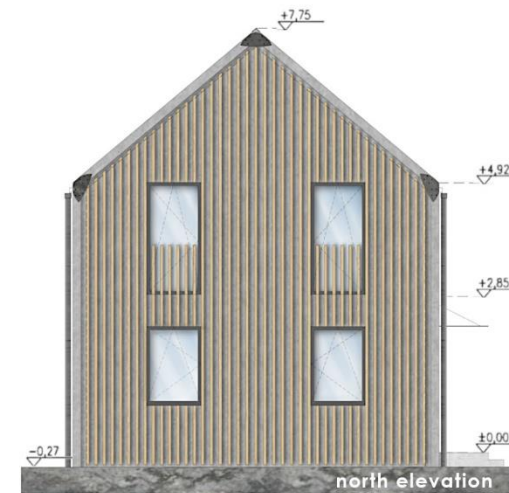
GROUND FLOOR		area
0.1	LIVING ROOM WITH A KITCHEN	29,3 m ²
0.2	HALL	7,3 m ²
0.3	ROOM I	8,2 m ²
0.4	ROOM II	8,2 m ²
0.5	BATHROOM	3,1 m ²
0.6	TECHNICAL ROOM	2,8 m ²
0.7	STAIRS	3,9 m ²
		62,8 m²



FIRST FLOOR		area
1.1	CORRIDOR	8,9 m ²
1.2	BATHROOM	5,8 m ²
1.3	BEDROOM I	12,9 m ²
1.4	BEDROOM II	11,9 m ²
1.5	BEDROOM III	18,9 m ²
		58,4 m²



TOTAL:
GROUND FLOOR AND
FIRST FLOOR: 121,2m²



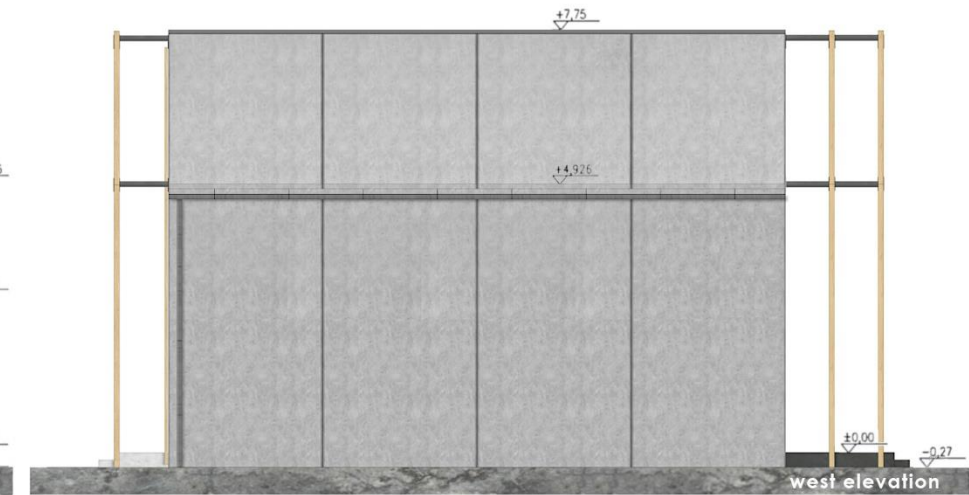
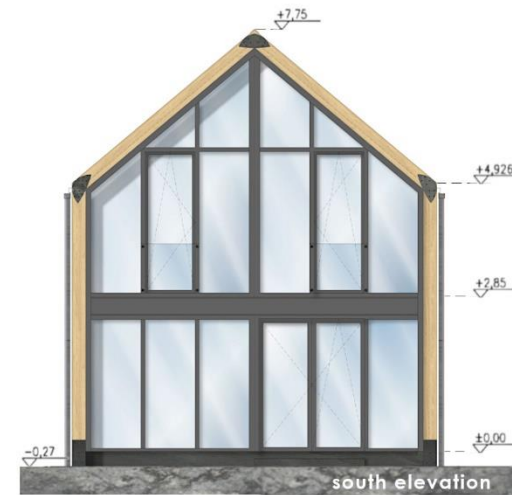
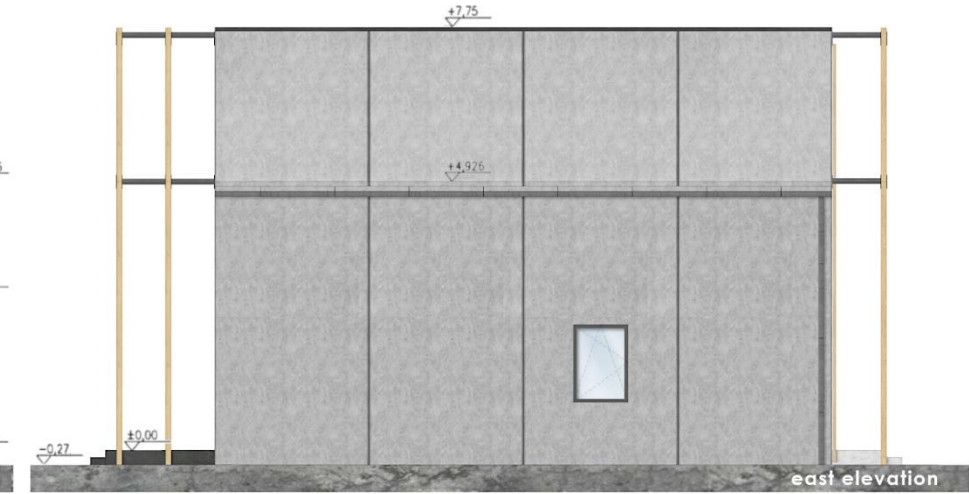
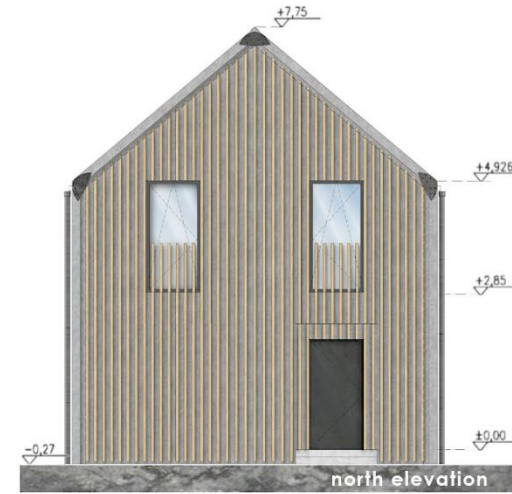
GROUND FLOOR		area
0.1	LIVING ROOM WITH A KITCHEN	49.1 m ²
0.2	HALL	4.1 m ²
0.3	BATHROOM	3.2 m ²
0.4	TECHNICAL ROOM	3.4 m ²
0.5	STAIRS	4.7 m ²
		64.5 m²



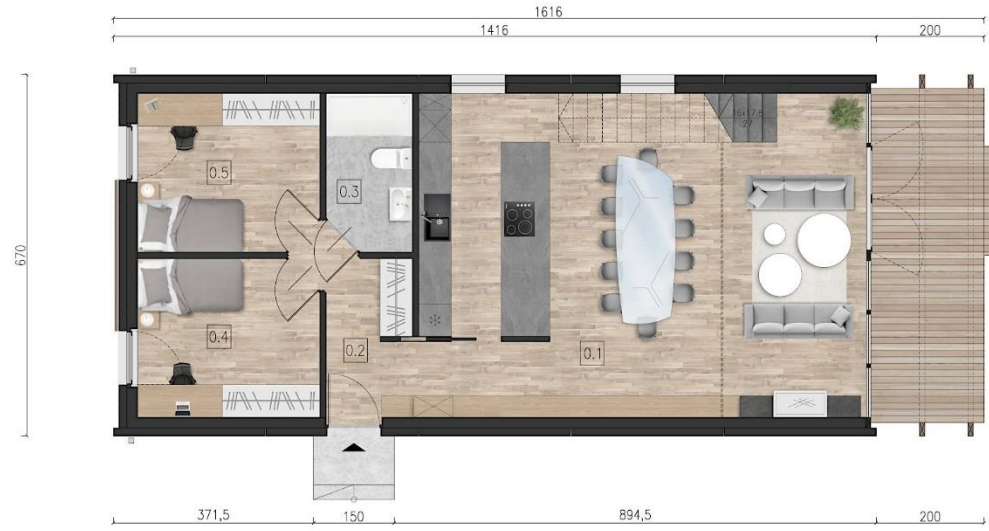
FIRST FLOOR		area
1.1	CORRIDOR	6.3 m ²
1.2	BATHROOM	5.8 m ²
1.3	BEDROOM I	15.4 m ²
1.4	BEDROOM II	8.1 m ²
1.5	BEDROOM III	23.7 m ²
		59.3 m²



TOTAL:
GROUND FLOOR AND
FIRST FLOOR: 123,8m²



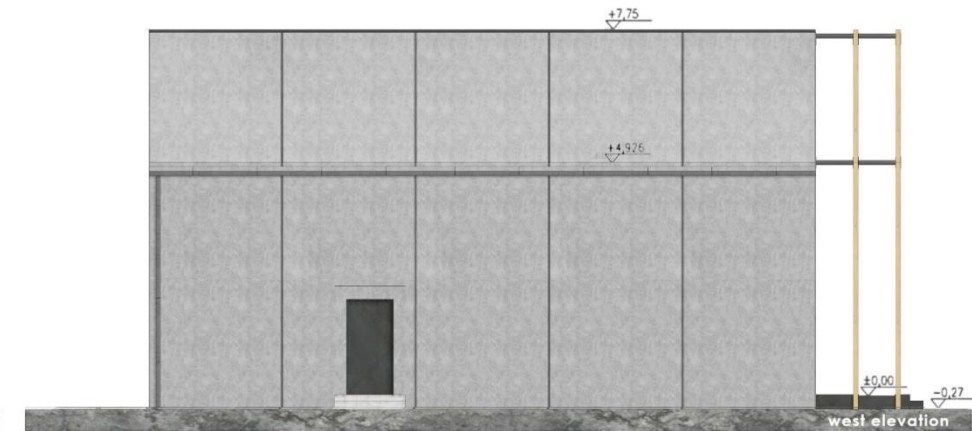
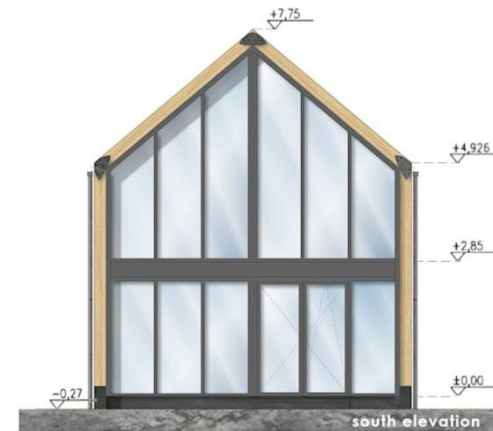
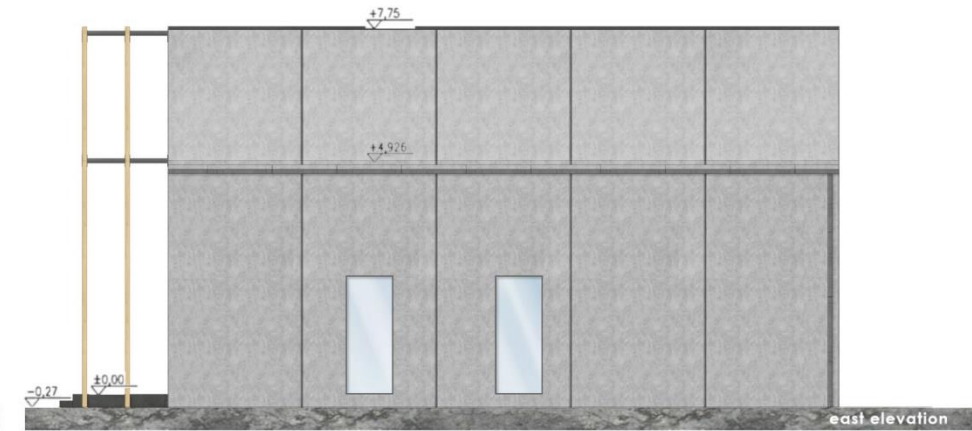
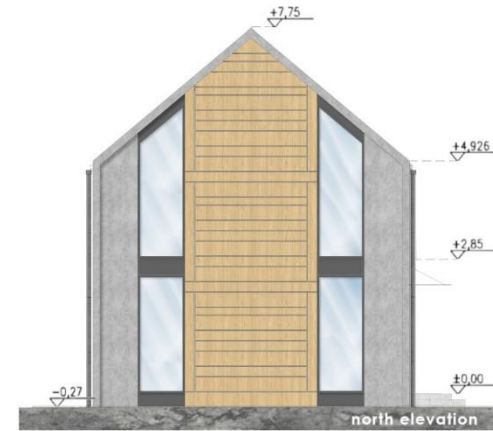
GROUND FLOOR		area
0.1	LIVING ROOM WITH A KITCHEN	42.6 m ²
0.2	HALL	8.5 m ²
0.3	BATHROOM	4.5 m ²
0.4	ROOM I	9.7 m ²
0.5	ROOM II	9.7 m ²
0.6	STAIRS	3.6 m ²
		78.6 m²



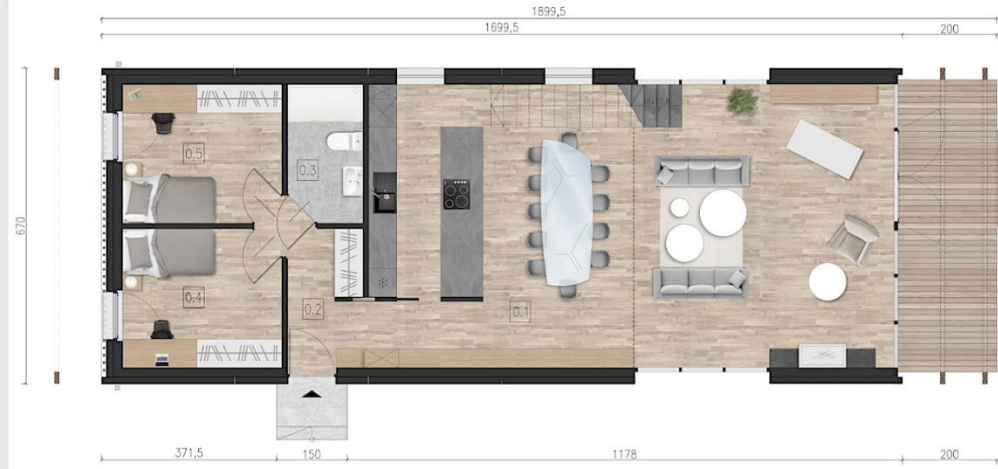
FIRST FLOOR		area
1.1	MEZZANINE	24.0 m ²
1.2	BEDROOM	20.3 m ²
1.3	BATHROOM	8.2 m ²
1.4	CLOSET	8.2 m ²
		60.7 m²



TOTAL:
GROUND FLOOR AND
FIRST FLOOR: 139,3m²



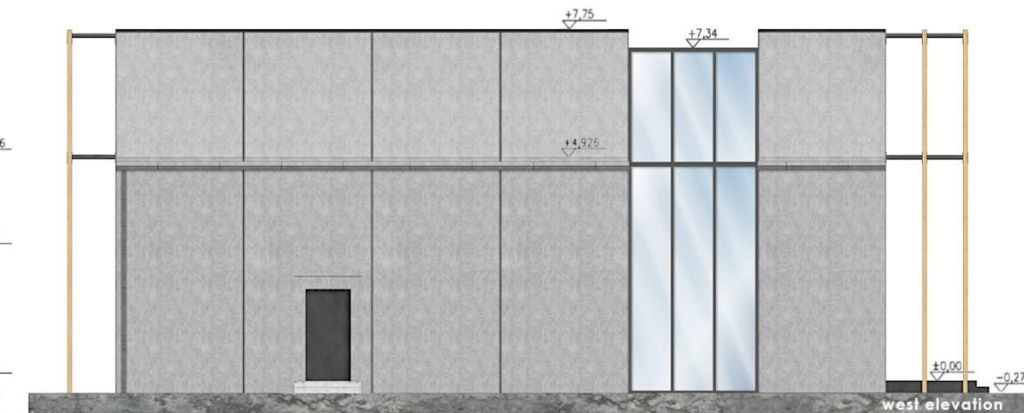
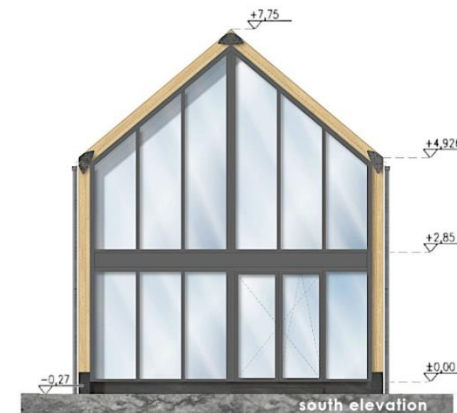
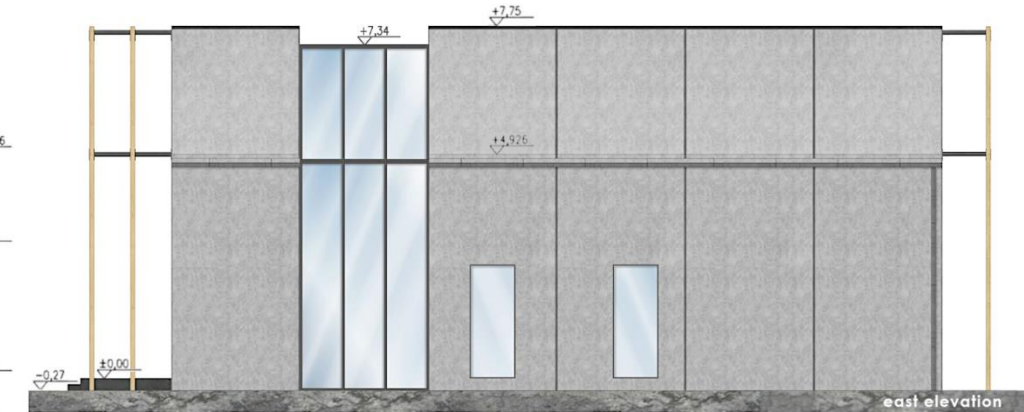
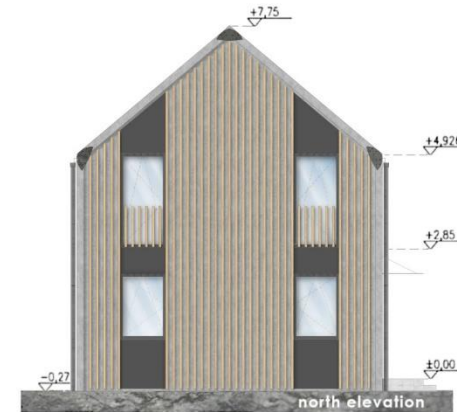
GROUND FLOOR		area
0.1	LIVING ROOM WITH A KITCHEN	59.6 m ²
0.2	HALL	8.5 m ²
0.3	BATHROOM	4.5 m ²
0.4	ROOM I	9.7 m ²
0.5	ROOM II	9.7 m ²
0.6	STAIRS	3.6 m ²
		95.6 m²



FIRST FLOOR		area
1.1	MEZZANINE	24.0 m ²
1.2	BEDROOM	20.3 m ²
1.3	BATHROOM	8.2 m ²
1.4	CLOSET	8.2 m ²
		60.7 m²



TOTAL:
GROUND FLOOR AND
FIRST FLOOR: 156,3m²



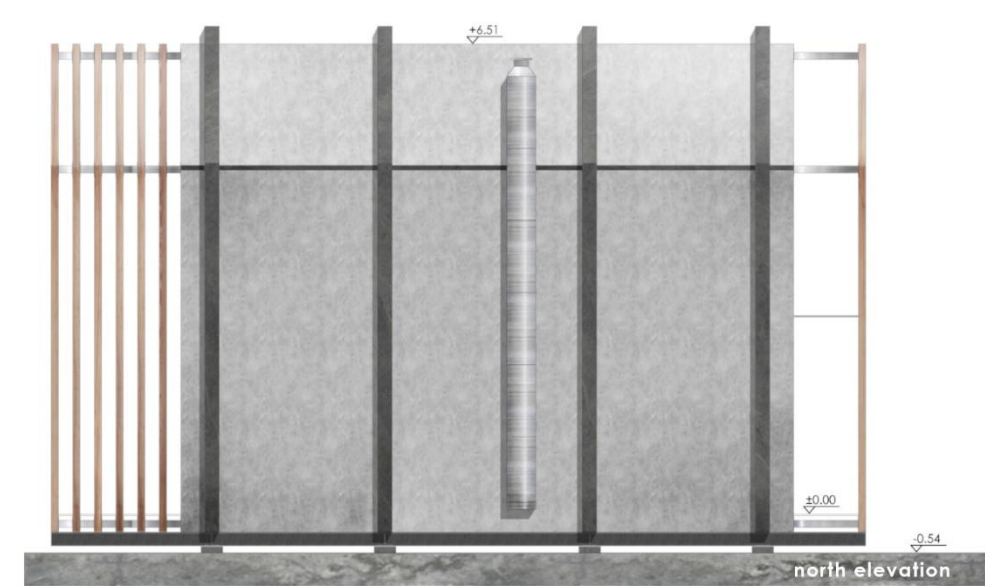
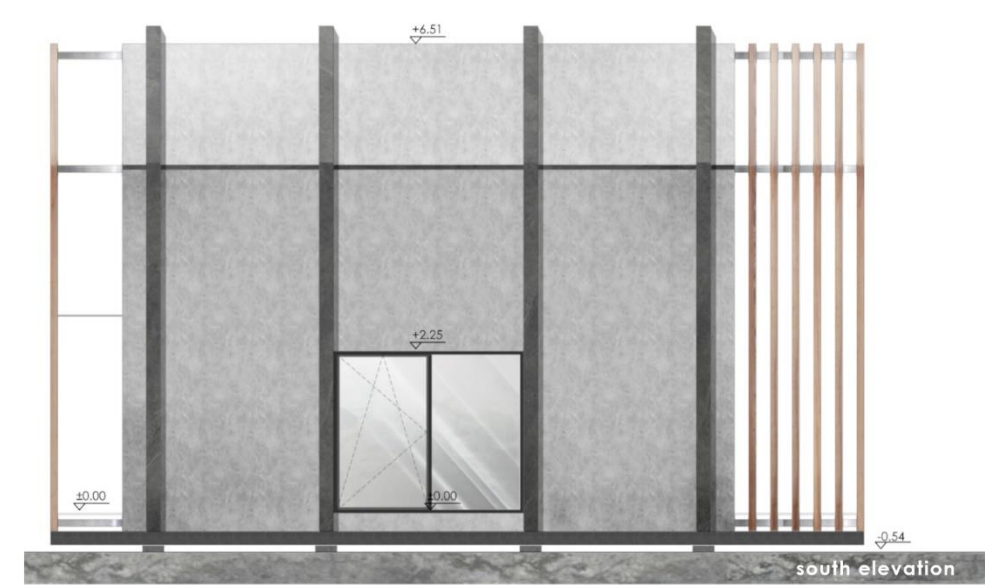
GROUND FLOOR		area
0.1	HALL	3,7 m ²
0.2	KITCHEN	5,4 m ²
0.3	LIVING ROOM	15,0 m ²
0.4	BATHROOM	3,8 m ²
		27,9 m²



FIRST FLOOR		area
1.1	BEDROOM I	11,3 m ²
1.2	BEDROOM II	13,2 m ²
1.3	CORRIDOR	1,5 m ²
		26,0 m²



TOTAL:
GROUND FLOOR AND
FIRST FLOOR: 53,9m²



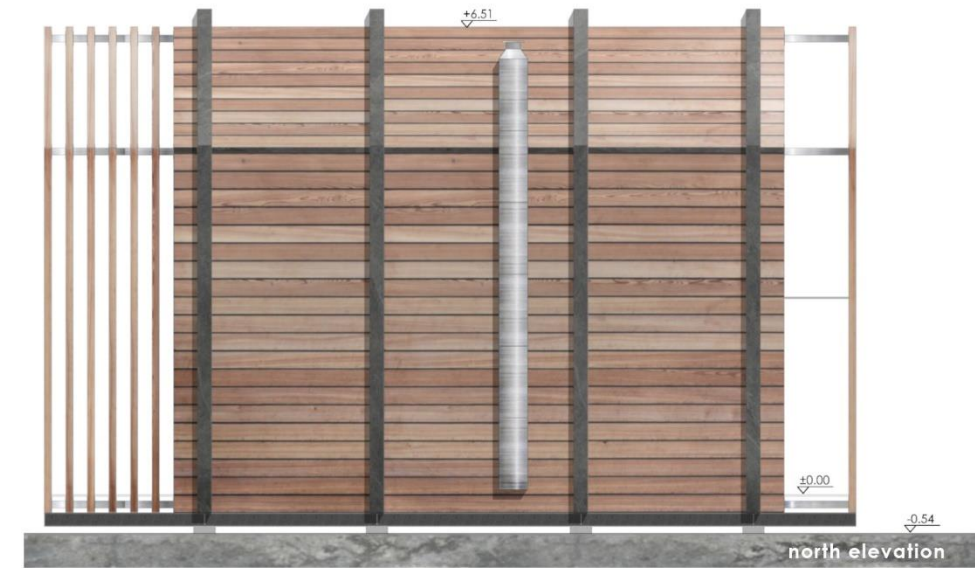
GROUND FLOOR		area
0.1	HALL	3,7 m ²
0.2	KITCHEN	5,4 m ²
0.3	LIVING ROOM	15,0 m ²
0.4	BATHROOM	3,8 m ²
		27,9 m²



FIRST FLOOR		area
1.1	BEDROOM I	11,3 m ²
1.2	BEDROOM II	13,2 m ²
1.3	CORRIDOR	1,5 m ²
		26,0 m²



TOTAL:
GROUND FLOOR AND
FIRST FLOOR: 53,9m²



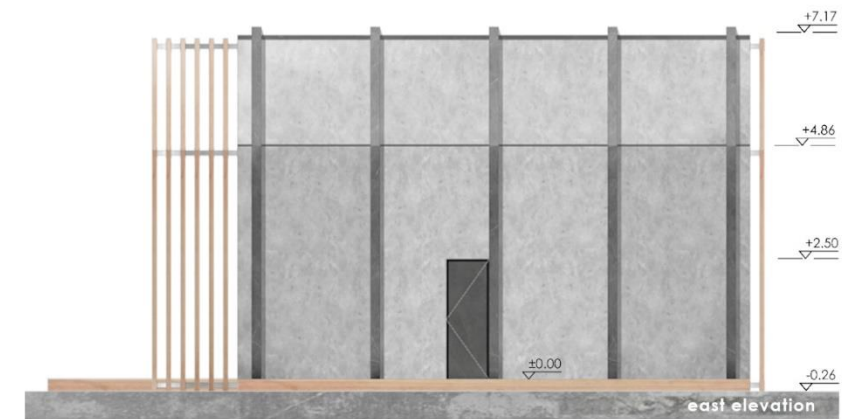
GROUND FLOOR		area
0.1	LIVING WITH DINING ROOM	35.4 m ²
0.2	KITCHEN	10.3 m ²
0.3	WC	1.7 m ²
0.4	STAIRS	3.0 m ²
		50.4 m²



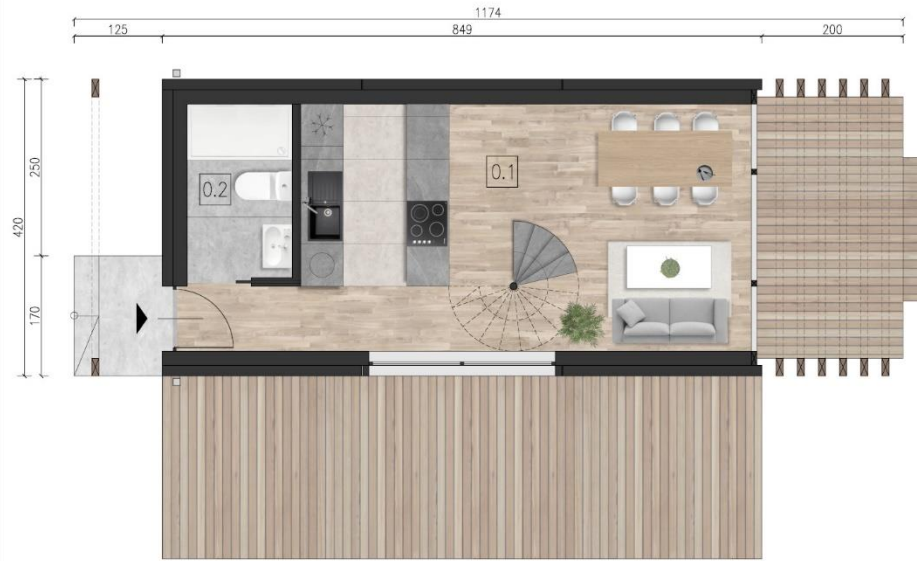
FIRST FLOOR		area
1.1	BEDROOM I	16.2 m ²
1.2	BEDROOM II	15.0 m ²
1.3	BATHROOM	7.2 m ²
1.4	CLOSET	2.8 m ²
1.5	CORRIDOR	4.3 m ²
		45.5 m²



TOTAL:
GROUND FLOOR AND
FIRST FLOOR: 95.9m²



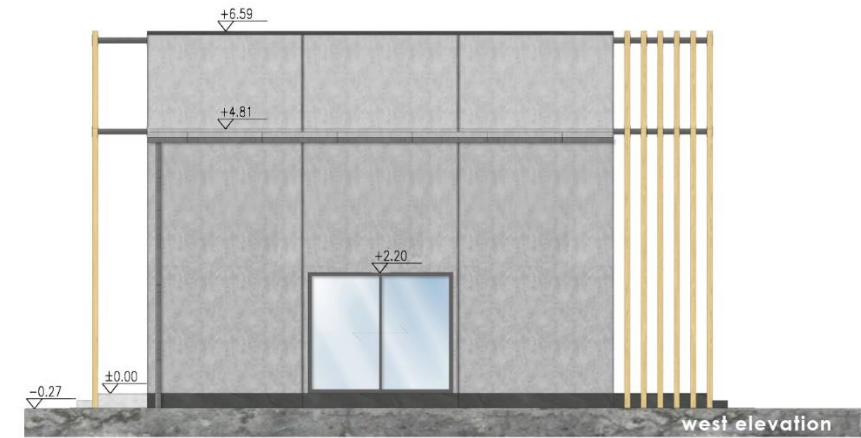
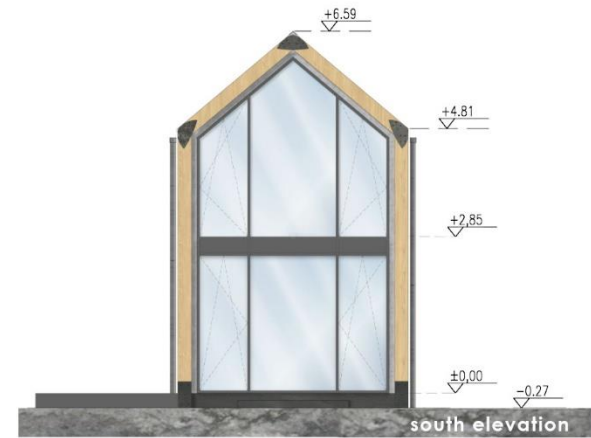
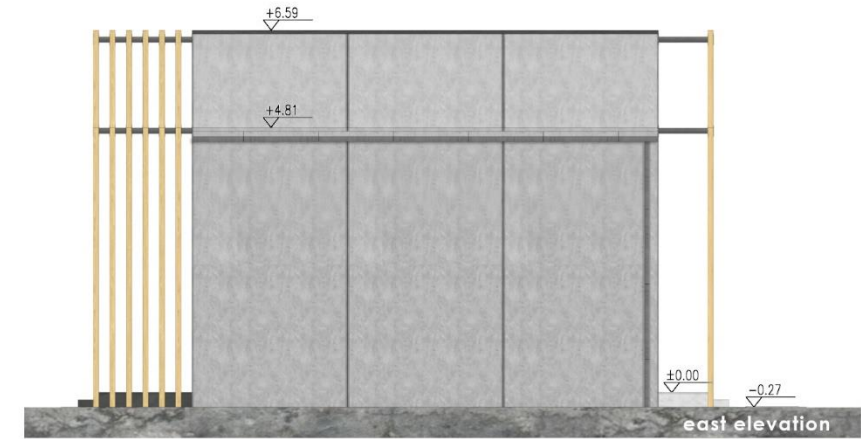
GROUND FLOOR		area
0.1	LIVING ROOM WITH A KITCHEN	24,2 m ²
0.2	BATHROOM	3,7 m ²
		37,9 m²



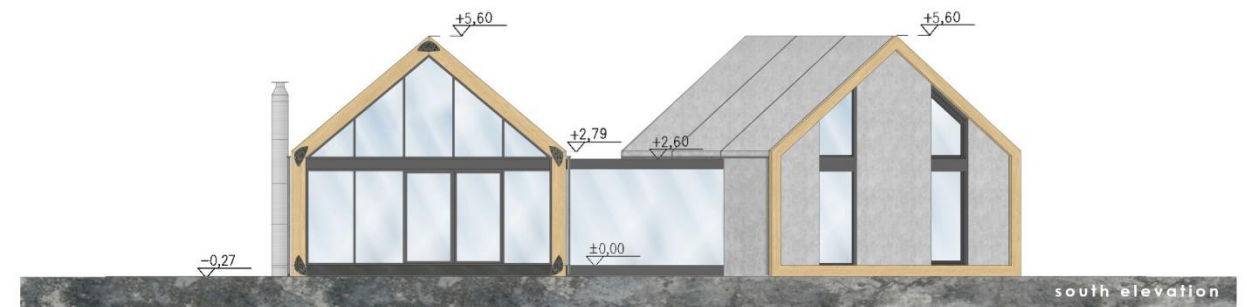
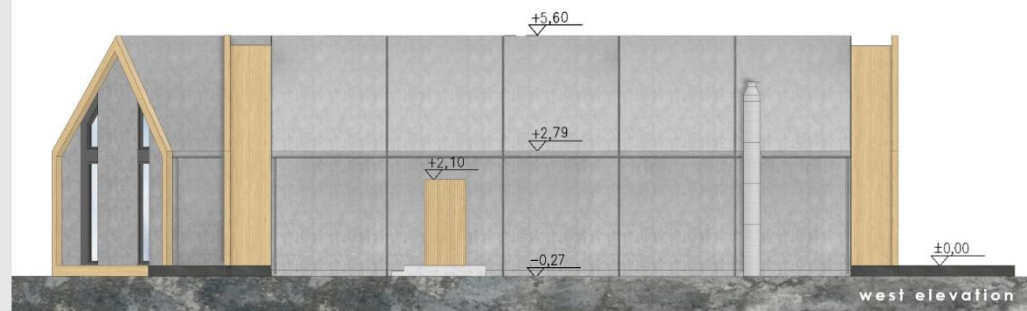
FIRST FLOOR		area
1.1	ROOM	8,5 m ²
1.2	BEDROOM	10,2 m ²
		18,7 m²



TOTAL:
GROUND FLOOR AND
FIRST FLOOR: 46,6m²



GROUND FLOOR	area
0.1 HALL	4,2 m ²
0.2 BATHROOM	7,3 m ²
0.3 ROOM	15,0 m ²
0.4 ROOM	9,4 m ²
0.5 ROOM	9,4 m ²
0.6 CONNECTOR	10,9 m ²
0.7 LIVING-ROOM WITH A KITCHEN	79,1 m ²
0.8 CLOSET	2,3 m ²
0.9 WC	1,6 m ²
	139,2 m²

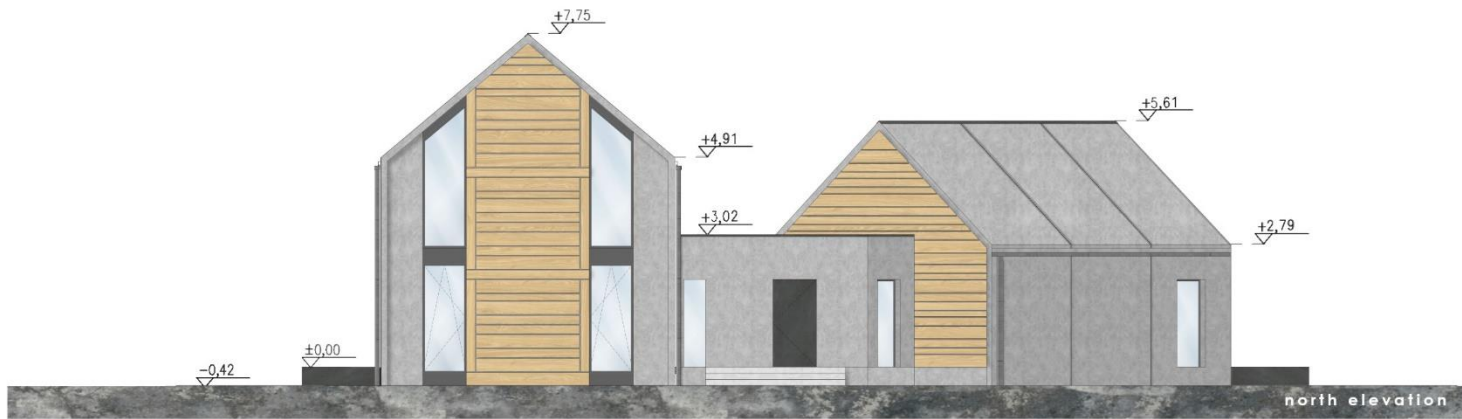


GROUND-FLOOR		area
0.1	CORRIDOR	24.0 m ²
0.2	LIVING-ROOM WITH A KITCHEN	59.6 m ²
0.3	BATHROOM	4.5 m ²
0.4	BEDROOM	9.7 m ²
0.5	BEDROOM	9.7 m ²
0.6	CLOSET	7.2 m ²
0.7	BATHROOM	5.6 m ²
0.8	BEDROOM	14.4 m ²
0.9	BEDROOM	14.4 m ²
		149,10 m²

FIRST FLOOR		area
1.1	MEZZANINE	23.9 m ²
1.2	BEDROOM	20.3 m ²
1.3	BATHROOM	8.2 m ²
1.4	CLOSET	8.2 m ²
		60.6 m²

TOTAL:
GROUND FLOOR AND
FIRST FLOOR: 209,7m²

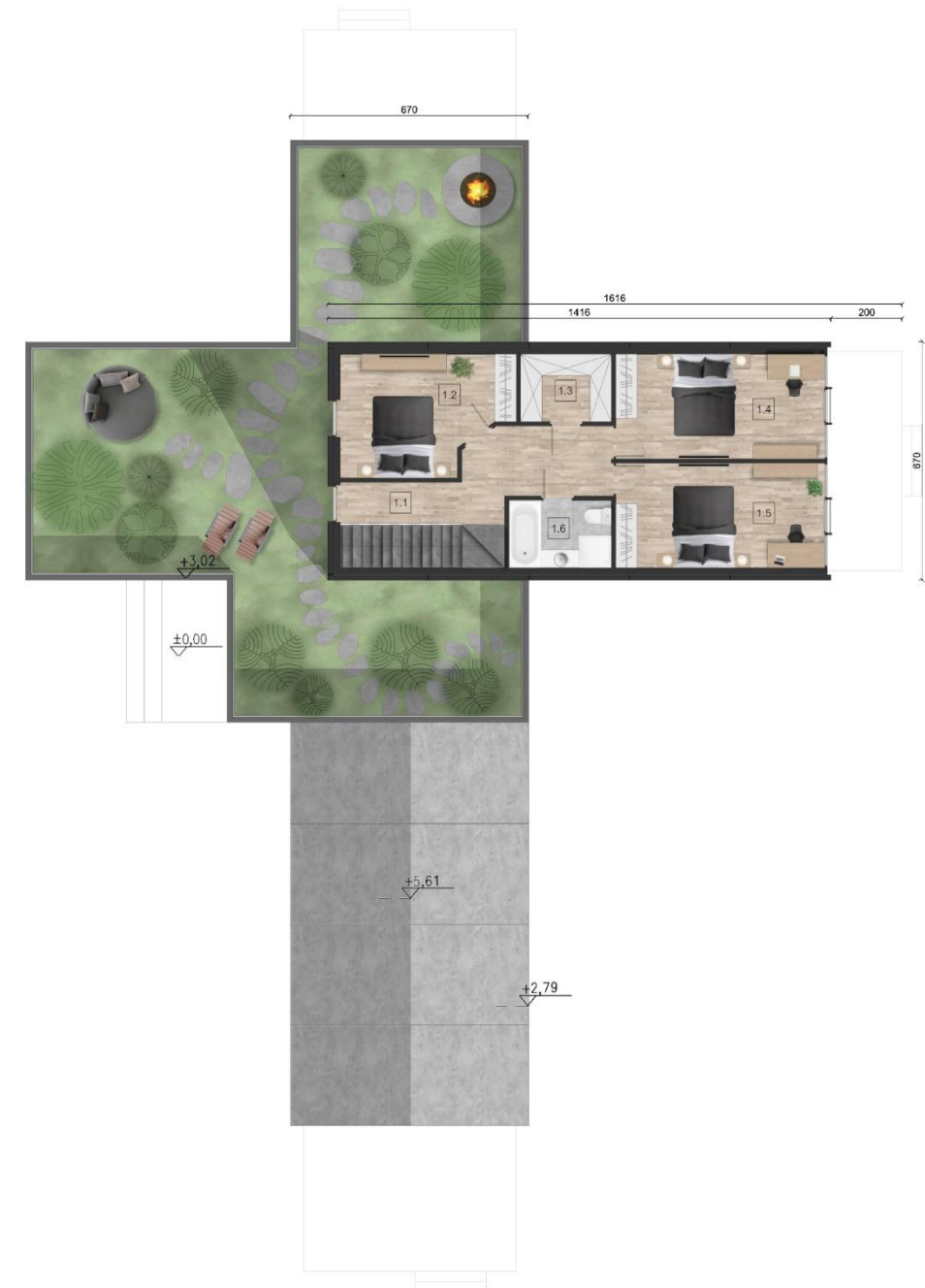
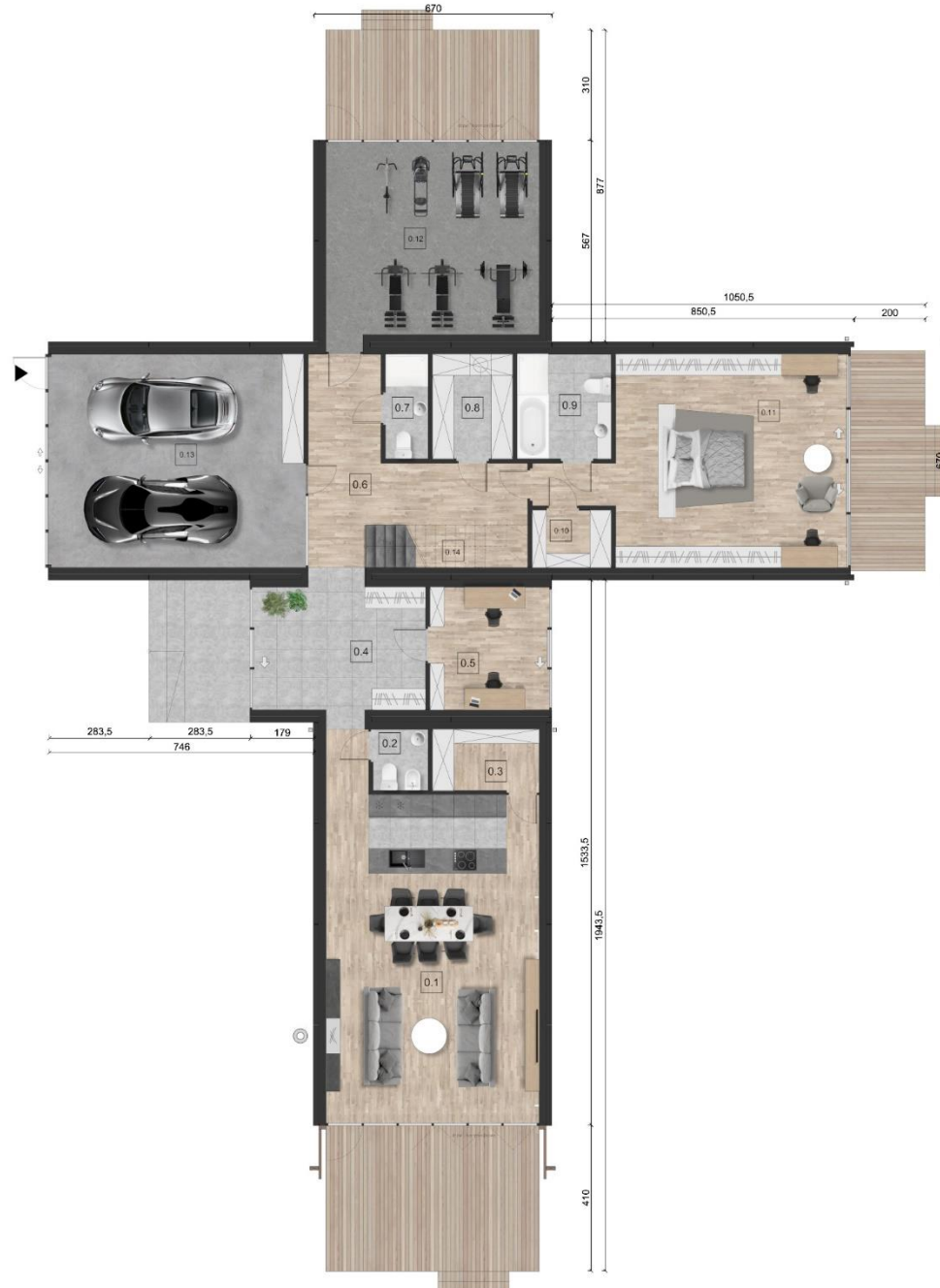


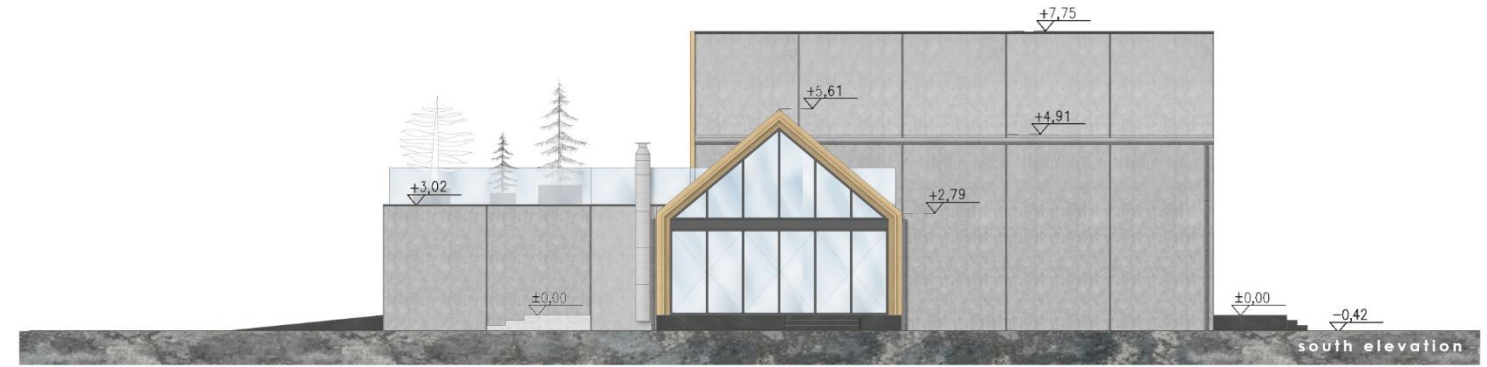


GROUND FLOOR		area
0.1	LIVING-ROOM WITH A KITCHEN	55,41 m ²
0.2	WC	2,67 m ²
0.3	PANTRY	5,16 m ²
0.4	HALL	19,70 m ²
0.5	OFFICE	11,59 m ²
0.6	CORRIDOR	19,02 m ²
0.7	BATHROOM	3,53 m ²
0.8	LAUNDRY	6,61 m ²
0.9	BATHROOM	7,79 m ²
0.10	CLOSET	3,57 m ²
0.11	ROOM	41,92 m ²
0.12	GYM	32,46 m ²
0.13	GARAGE	42,62 m ²
0.14	STAIRS	5,47 m ²
		257,52 m²

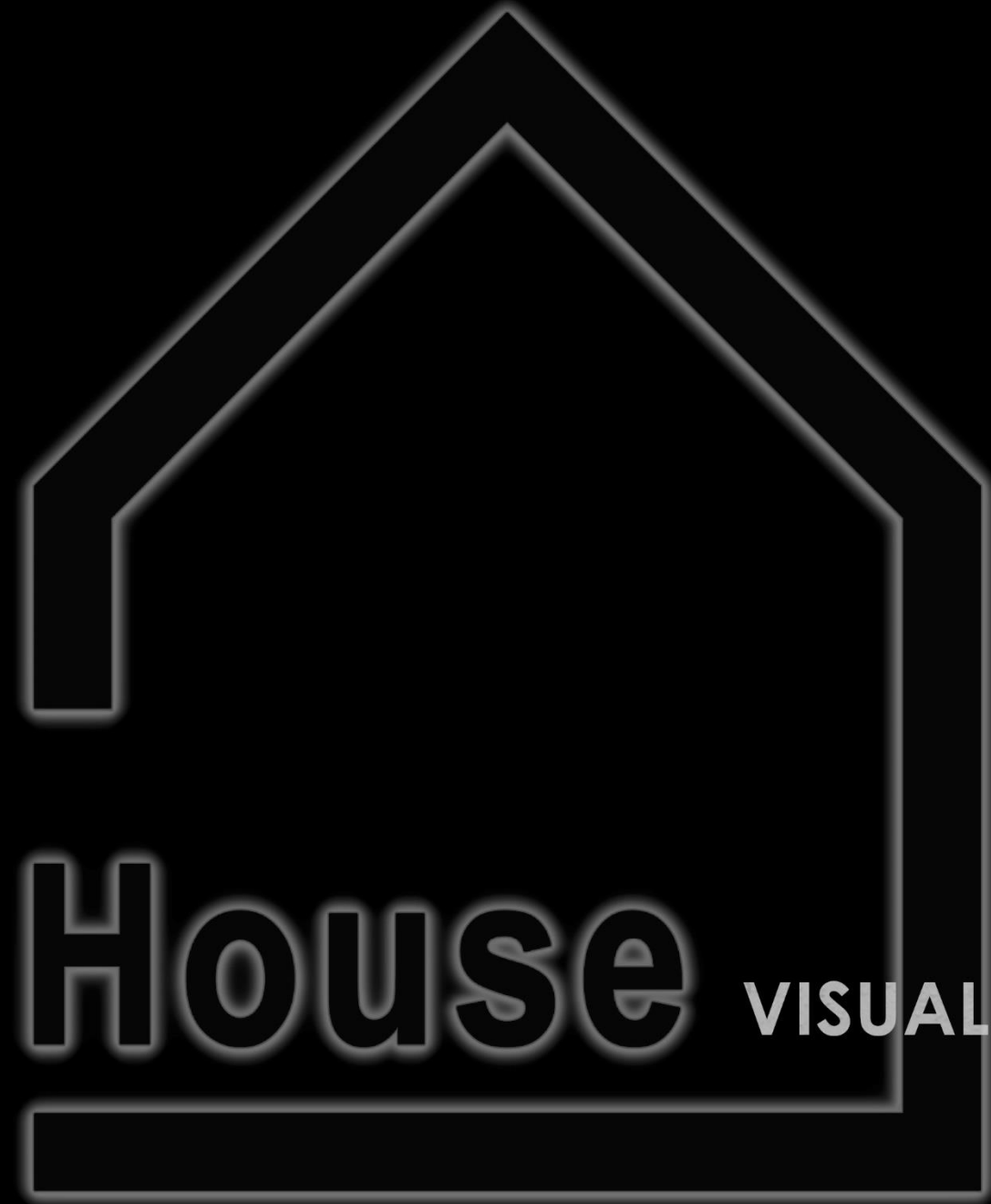
FIRST FLOOR		area
1.1	CORRIDOR	12,9m ²
1.2	ROOM	15,0 m ²
1.3	CLOSET	4,8 m ²
1.4	ROOM	17,3 m ²
1.5	ROOM	17,3 m ²
1.6	BATHROOM	5,5 m ²
		72,8 m²

**TOTAL:
GROUND FLOOR AND
FIRST FLOOR: 330,3m²**





02



Con House

VISUALIZATIONS



six-module
BUILDING
with additional
side
GLAZINGS



six-module
BUILDING
with mezzanine
INTERIOR







three-module
BUILDING
with wooden
elements on
ELEVATION



three-module
BUILDING
with wooden
elements on
ELEVATION
interior







four-module
BUILDING
with
CARPORT



31





four-module
BUILDING
with garage



32



four-module
**BUILDING
STANDARD**





one-storey, double-segment
BUILDNIG
with GLAZED CONNECTOR





four-module
BUILDING
with decorative **STONE**
ELEVATION and roofing





four-module **NARROW BUILDING** with decorative **STONE ELEVATION** and roofing



four-module
BUILDING
with wooden
facade,
as an option
walls
made of
**GLUED
WOOD**



03



Con House

PHOTOS
OF THE PROGRESS OF
CONHOUSE CONSTRUCTION

**FOUNDATION
ON COMPACTED
SOIL WITH LEAN
CONCRETE SCREED**



**PREFABRICATED
CONCRETE PANEL**



**MONTAGE OF
PREFABRICATED
WALLS**



EXECUTION OF FLASHINGS



MONTAGE OF WINDOW JOINERY



EXECUTION OF DECORATIVE FACADE ELEMENTS - TIMBER



**EXECUTION OF
DECORATIVE FACADE
ELEMENTS - TIMBER**



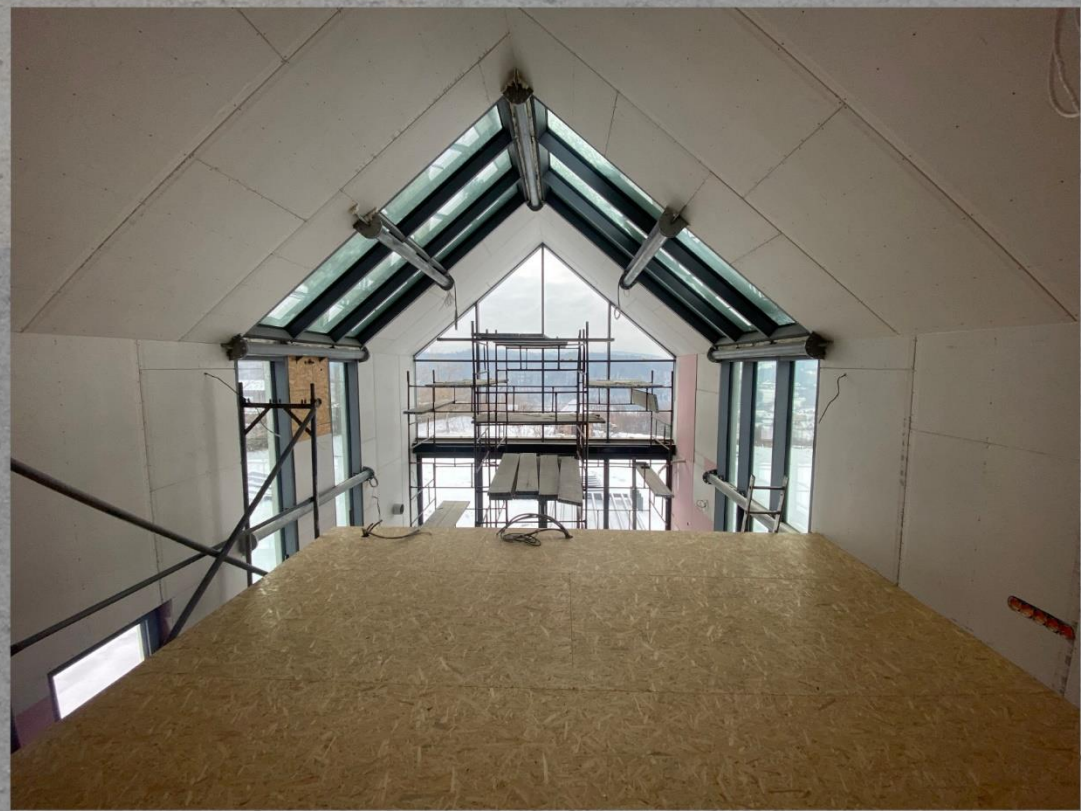
**EXECUTION OF
INDOOR
INSTALLATIONS**



**PUR FOAM
INSULATION**



**MONTAGE OF
PLASTERBOARD
AND
PULLING OUT THE
INSTALLATIONS**



**FILLING OF THE
PLASTERBOARDS AND
INTERIOR FINISHING**



www.conhouse.pl
email: biuro@conhouse.pl
(48) 503 53 60 58
Kraków, ul. Marka Eminowicza 7/2